



REFRIGERATED COUNTERS (FAN COOLING)

CONTENTS

A	GENERAL INFORMATION.....	Page 2
A1	PRODUCT DESCRIPTION	Page 3
A2	TECHNICAL INFORMATION	Page 3
A3	TRANSPORTATION	Page 4
A4	UNPACKING	Page 4
B	INSTALLATION	Page 4
C	SAFETY INSTRUCTIONS.....	Page 5
D	OPERATION	Page 6
E	CLEANING & MAINTENANCE.....	Page 6
F	TROUBLESHOOTING.....	Page 7
G	SPARE PART LIST- EXPLODING DRAWING.....	Page 8
H	ELECTRIC CIRCUIT SCHEMA	Page 24

A GENERAL INFORMATION

Before installing the appliance, read operation and maintenance instructions carefully. Wrong installation and part changing may damage the product or may cause injury on people. These are not in our company's responsibility to damage the appliance intentionally, negligence, detriments because of disobeying instructions and regulations, wrong connections. Unauthorized intervention to appliance invalidates the warranty.

1. This instruction manual should be kept in a safe place for future reference.
- 2. Installation should be made in accordance with ordinances and security rules of that country by a qualified service personnel.**
3. This appliance has to be used by trained person.
4. Please turn off the appliance immediately in the event of malfunction or failure. The appliance should be repaired only by authorized service personnel. Please demand original spare part.

REFRIGERATED COUNTERS (FAN COOLING)

A1 PRODUCT DESCRIPTION

*The Professional Refrigerated Counters(Fan Cooling) ,that provides high efficiency has been designed to be used in industrial kitchen.

Product Code	Dimensions (mm)	Weight (kg)	Packaging Dimensions (mm)
EMP.150.60.01-CLS	1500x600x850	106	1540x630x970
EMP.150.70.01-CLS	1500x700x850	115	1540x730x970
EMP.200.60.01-CLS	2000x600x850	135	2040x630x970
EMP.200.70.01-CLS	2000x700x850	142	2040x730x970

A2 TECHNICAL INFORMATION

Kodu	Capacity (Lt)	Gas type	Gas (gr)	Power (KW)
EMP.150.60.01-CLS	250	R-290	130	0,14
EMP.150.70.01-CLS	300	R-290	130	0,14
EMP.200.60.01-CLS	400	R-290	140	0,16
EMP.200.70.01-CLS	500	R-290	140	0,16

Operating Voltage (V)	220-230
Cable (mm ²)	3x1,5
Fuse (A)	25
Operating Range (°C)	+0 / +5
Density (kg/m ³)	40

REFRIGERATED COUNTERS (FAN COOLING)

A3 TRANSPORTATION

*This appliance can not be moved by hand from area to area. It must be moved on pallet with forklift truck.

A4 UNPACKING

*Please unpack the package according to the security codes and ordinances of current country and get rid from the pack. Parts which contacts with food are produced by stainless steel. All plastic parts are marked by material's symbol.

*Please check that all the parts of appliance had come completely and if they are damaged or not during the shipping.

B INSTALLATION

*Please place the product to straight and sturdy ground, please take necessary steps against possibility of overturn.

*Technician who will serve for installation and service for the appliance must be professional on this subject and must have installation and service licenses by the company.

*Connection to Electric Power Supply must be done by authorized person.

*Please be sure that the voltage connected to appliance must be equal with the voltage which is on appliance's label.



This appliance must be connected to an earthed outlet in accordance with safety rules and standard.











*Appliance's earthing must be connected to earthing line on panel which is nearest to electric installation.

*Connection to the main fuse and leak current fuse must be done in accordance with the current regulations.

*If the 2 appliance will be placed adjacently, there must be at least 2 cm space between them. The Condensation is prevented.

REFRIGERATED COUNTERS (FAN COOLING)

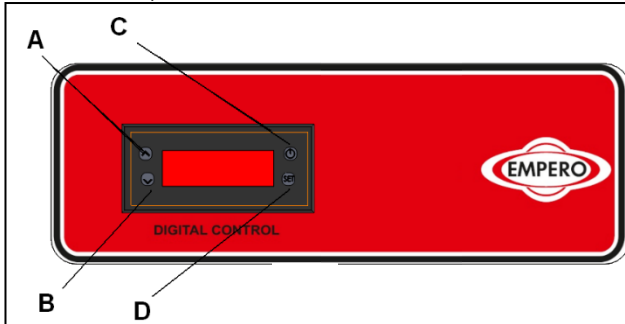
C SAFETY INSTRUCTIONS

-  *Do not use the appliance in insufficient lighted place.
-  *Do not touch the moving attachments while the appliance operates.
-  *Do not install the appliance in the presence of flammable or explosive materials.
-  *Do not operate the appliance when the machine is empty.
-  *Do not load so less or more than appliance's capacity.
-  *Do not attempt to use the appliance without suitable protective equipments.
-  *Because of any reason if there is a fire or flame flare where the appliance is used, turn off all gas valves and electric contactor switch quickly and use fire extinguisher. Never use water to extinguish the fire.
-  *All the damages because of not having earthing connection will not be on warranty.
-  *Prevent the appliance to take sunshine directly.
-  *Do not place heavy objects on to the appliance.

REFRIGERATED COUNTERS (FAN COOLING)

D OPERATION

*Control Panel;



- A : Degree increase
- B : Degree reduce
- C : Indicator ON/OFF
- D : SET approval button
- E : ON position
- F : OFF position

*Operating;

- Clean the inner and outer surface of the appliance with warm cloth before first use. Then clean with wet cloth and dry.
- Plug in the appliance.
- Activate ON/OFF button at control panel.
- Set the temperature of the appliance with up-down arrows.
- Operate the appliance for 12 hours when it is empty. at first use .Meanwhile do not open the lids.
- After inserting the products to the appliance, close the lids.
- If the lids are opened often or left opened, these situations can effect the cooling of the products.
- When the appliance is not needed to be used, switch OFF and unplug the appliance.

E CLEANING & MAINTENANCE

➤ CLEANING AND MAINTENANCE AFTER EVERY USE

- Always turn off the appliance and disconnect from the power supply before cleaning.
- Clean the inner surfaces and shelves with moist cloth and then dry after every evacuation of material.
- Clean the control panel with dry cloth.
- Pay attention the cleaning materials to be hygienic.
- Do not use abrasive cleaning chemicals as these can leave harmful residues.



REFRIGERATED COUNTERS (FAN COOLING)

- Do not clean the appliance by spraying water directly ,otherwise electric motor may get damaged.

➤ PERIODIC CLEANING AND MAINTENANCE

- Maintenance should be done by qualified person.
- Get the periodic maintenance of the appliance once in every 15 days.
- Clean the condenser with a plastic rigid brush.
- Clean the fan in periodic times.
- Make periodic maintenance of the fire-extinguisher.

F TROUBLESHOOTING

THE APPLIANCE DOESN'T OPERATE	<ol style="list-style-type: none"> 1. Check if the appliance is plugged in. 2. Check the electrical connections and voltage. 3. Check if the fuse is on or off.
--------------------------------------	--

THE APPLIANCE IS NOISY	<ol style="list-style-type: none"> 1. Check the motor. 2. If the connection pipes contact with compressor,remove it.
-------------------------------	--

THE APPLIANCE STOPPED	<ol style="list-style-type: none"> 1. The appliance can stop due to low voltage.In this situation check the voltage. 2. If there is any leakage current at electric connections,the appliance stops.In this situation call the authorized service.
------------------------------	--

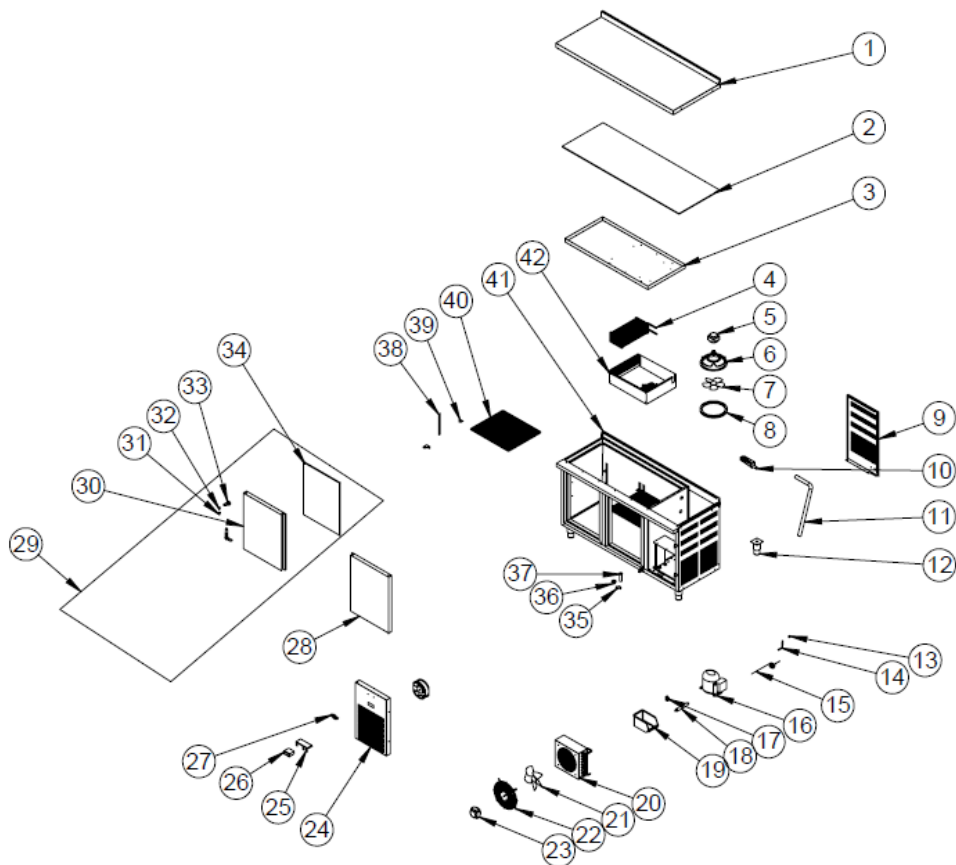
INNER TEMPERATURE IS TOO HIGH	<ol style="list-style-type: none"> 1. Clean the condenser. 2. Check the air conditioning. 3. If the hot product is inserted,take it off. 4. If the door is opened,close it.
--------------------------------------	---

<ul style="list-style-type: none"> • If cooling is not done at suitable quality • If any function of security doesn't work <ul style="list-style-type: none"> ➤ Do not use the appliance.

***If these problems are still going on,contact with our authorized services.**

REFRIGERATED COUNTERS (FAN COOLING)

G SPARE PART LIST- EXPLODING DRAWINGS

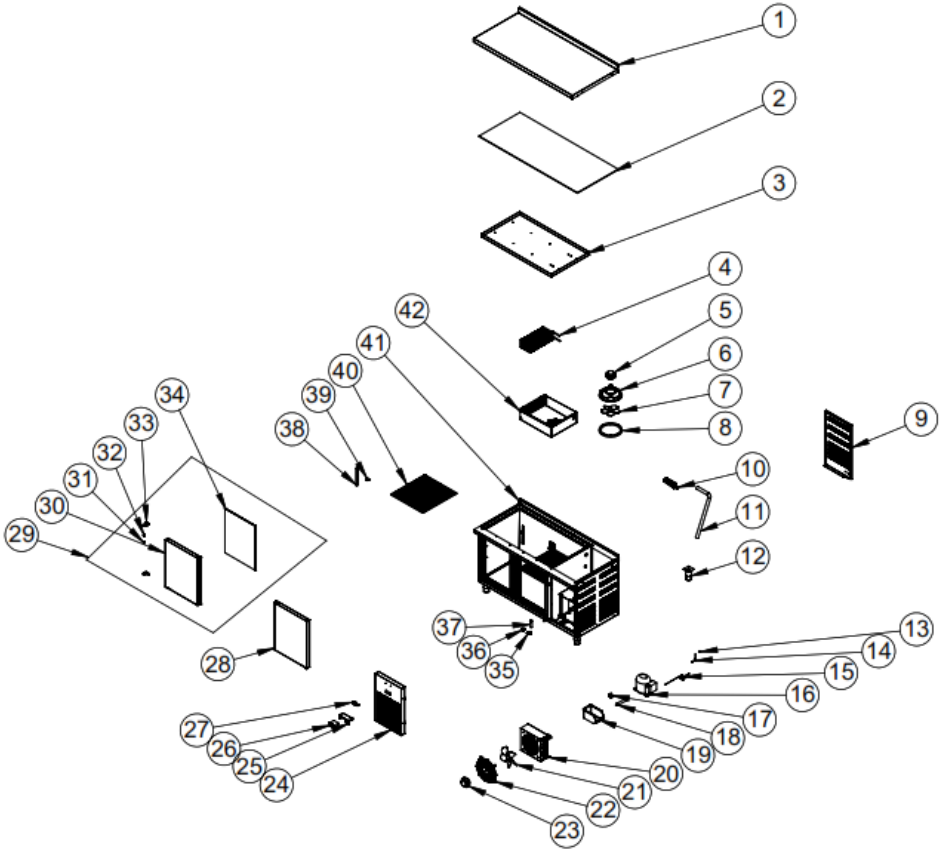


REFRIGERATED COUNTERS (FAN COOLING)

ÜRÜN KODU : EMP.150.60.01-CLS		
NO	ÜST TABLA SACI	ÜRÜN KODU
1	149X52X8 MM HAM SUNTA	YSC-ERK.1560-LZ-0030
2	ÜST TAVA SACI (ALM 430F)	M.MBL-ERK-001
3	TEZGAH EVAPARATÖRÜ RESİM NO- 909-	YSC-ERK.1560-PN-0180
4	FAN MOTORU 50 W (ELCO VN 1020)	2017M.SOG-EVP-059
5	FAN ÇEMBER PLASTİĞİ 20CM	2017M.ELK-MTR-FMT-002
6	20 CM LİK FAN KANADI(ELKO)	M.ENJ-ERS-PLS-AYR-001
7	DAVLUMBAZ PLASTİK FİTİLİCPY	M.ELK-HVL-FKN-001
8	EMP.150.60-AKB MOTOR ARKA KAPAK SC	M.CNT-ERK-002
9	PLASTİK SULUK	YSC-ERK.1560-PN-0122
10	3/4 GRİ 200 mm PVC SİRİAL TAHLİYE HORTUMU (İÇ ÇAPI	M.ENJ-ERK-PLS-003
11	15 CM İNOX BORU AYAK	HTS-HRT-001
12	1/4 SERVİS SİBOBU 10 CM (BAKIR BORULU)	M.AKS-AYK-INOX-001
13	8X1-ÇAP(5-16) MM BAKIR BORU	M.SOG-MUH-001
14	KILCAL BAKIR BORU	HGZ-BR-BK-6*1
15	AEZ4425Y HERMETİK KOMPRESÖR 1-4	-
16	DRAYER TUTACAĞI	2017M.SOG-KMS-018
17	40 GR KAYNAKLI DRAYER (DENA)	2017M.PLS-ERK-003
18	SET-401-A-PLASTİK ÇEKMECELİ KUTU	2017M.SOG-DRY-002
19	1-3 TEK KAPI KONDANSER	2017M.PLS-ERK-038
20	20 CM LİK FAN KANADI(ELKO)	2017M.SOG-KDS-037
21	FAN ÇEMBER TELİ 25 CM	M.ELK-HVL-FKN-001
22	FAN MOTORU 50 W (ELCO VN 1020)	2017M.MUH-001
23	EMP.150.60.01-MOTOR KAPI SACI-KROM ESM	2017M.ELK-MTR-FMT-002
24	EMP.150.60 DJİTAL KART KORUMA SACI	YSC-ERK.1560-PN-0181
25	EVCO DJİTAL TERMOSTAT SENSÖRSUZ EV3B22N7	YSC-ERK.1560-LZ-0025
26	EMPERO KABARTMALI METAL ETİKET (PLUS)	M.ELK-EDM-DGT-043
27	150.60.01 TEZGAH KAPAK AKUBLE ARA MONTAJ-SAG-430S-	M.AKS-OZL-MTL-006
28	150.60.01 TEZGAH KAPAK AKUBLE ARA MONTAJ-SOL-430S-	ARA-ERK.1560-KROM
29	EMP.150.60-AKB KAPAK GÖVDE SACI SOL-KROM ESM	ARA-ERK.1560-KROM
30	CAM MENTEŞE PLASTİK BURCU	YSC-ERK.1560-LZ-0067
31	70.80- SAĞ MENTEŞE UZUN PİMİ	M.ENJ-ERK-PLS-022
32	70.80 SAĞ(ÜST) MENTEŞE 4 mm SC	M.AKS-MNT-SC-005
33	TEZGAH KAPI CONTASI	M.AKS-MNT-SC-001
34	PANJUR MENTEŞESİ	M.CNT-ERK-001
35	TAHLİYE BORUSU SOMUNU	2017M.ENJ-ERK-PLS-010
36	TAHLİYE BORUSU	2017 M.ENJ-ERK-PLS-024
37	RAF DİKMESİ 22 CM	2017 M.ENJ-ERK-PLS-002
38	RAF TIRNAĞI	2017M.MUH-002
39	42X49 RAF	M.RAF-ERK-002
40	ŞASE	M.RAF-ERK-001
41	EMP.150.70.01-EV- TEZGAH DAVLUMBAZ SC- 430F	-
42	ÜST TABLA SACI	YSC-ERK.1570-PN-0283

REFRIGERATED COUNTERS (FAN COOLING)

G YEDEK PARÇA LİSTESİ-DEMONTE GÖRÜNÜŞ

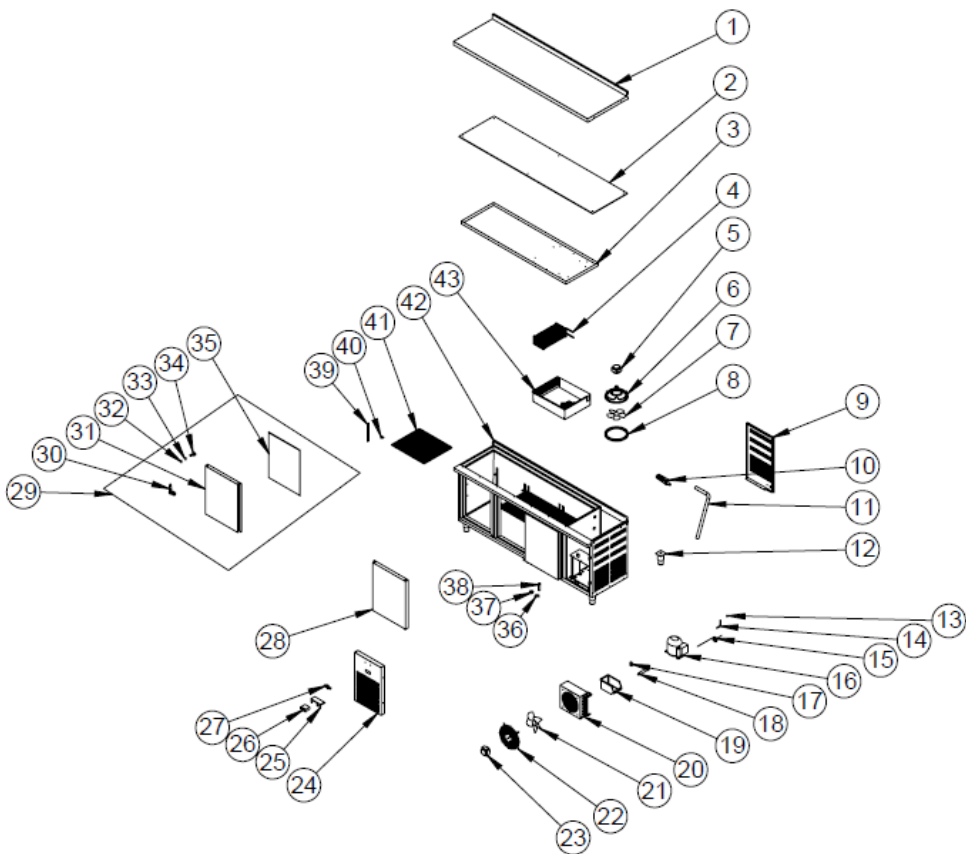


REFRIGERATED COUNTERS (FAN COOLING)

ÜRÜN KODU : EMP.150.70.01-CLS		
NO	ÜRÜN ADI	ÜRÜN KODU
1	ÜST TABLA SACI	YSC-ERK.1570-LZ-0040
2	149X62X8 MM HAM SUNTA	M.MBL-ERK-002
3	ÜST TAVA SACI (430F)	YSC-ERK.1570-PN-0291
4	TEZGAH EVAPARATÖRÜ RESİM NO- 909-	2017M.SOG-EVP-059
5	FAN MOTORU 50 W (ELCO VN 1020)	2017M.ELK-MTR-FMT-002
6	FAN ÇEMBER PLASTİĞİ 20CM	M.ENJ-ERS-PLS-AYR-001
7	20 CM LİK FAN KANADI(ELKO)	M.ELK-HVL-FKN-001
8	DAVLUMBAZ PLASTİK FİTİLİCPY	M.CNT-ERK-002
9	EMP.150.60-AKB MOTOR ARKA KAPAK SC	YSC-ERK.1560-PN-0122
10	PLASTİK SULUK	M.ENJ-ERK-PLS-003
11	3/4 GRİ 200 mm PVC SİRAL TAHLİYE HORTUMU (İÇ ÇAPİ 19mm)	HTS-HRT-001
12	15 CM İNOX BORU AYAK	M.AKS-AYK-İNX-001
13	1/4 SERVİS SİBOBU 10 CM (BAKIR BORULU)	M.SOG-MUH-001
14	8X1-ÇAP(5-16) MM BAKIR BORU	HGZ-BR-BK-6*1
15	KILCAL BAKIR BORU	-
16	AEZ4425Y HERMETİK KOMPRESÖR 1-4	2017M.SOG-KMS-018
17	DRAYER TUTACAĞI	2017M.PLS-ERK-003
18	40 GR KAYNAKLI DRAYER (DENA)	2017M.SOG-DRY-002
19	SET-401-A-PLASTİK ÇEKMECELİ KUTU	2017M.PLS-ERK-038
20	1-3 TEK KAPI KONDANSER	2017M.SOG-KDS-037
21	20 CM LİK FAN KANADI(ELKO)	M.ELK-HVL-FKN-001
22	FAN ÇEMBER TELİ 25 CM	2017M.MUH-001
23	FAN MOTORU 50 W (ELCO VN 1020)	2017M.ELK-MTR-FMT-002
24	EMP.150.60.01-MOTOR KAPI SACI-KROM ESM	YSC-ERK.1560-PN-0181
25	EMP.150.60 DJİTAL KART KORUMA SACI	YSC-ERK.1560-LZ-0025
26	EVCO DJİTAL TERMOSTAT SENSÖRSUZ EV3B22N7	M.ELK-EDM-DGT-043
27	EMPERO KABARTMALI METAL ETİKET (PLUS)	M.AKS-OZL-MTL-006
28	150.60.01 TEZGAH KAPAK AKUBLE ARA MONTAJ-SAG-430S-KROM	ARA-ERK.1560-KROM
29	150.60.01 TEZGAH KAPAK AKUBLE ARA MONTAJ-SOL-430S-KROM	ARA-ERK.1560-KROM
30	EMP.150.60-AKB KAPAK GÖVDE SACI SOL-KROM ESM	YSC-ERK.1560-LZ-0067
31	CAM MENTEŞE PLASTİK BURCU	M.ENJ-ERK-PLS-022
32	70.80- SAĞ MENTEŞE UZUN PİMİ	M.AKS-MNT-SC-005
33	70.80 SAĞ(ÜST) MENTEŞE 4 mm SC	M.AKS-MNT-SC-001
34	TEZGAH KAPI CONTASI	M.CNT-ERK-001
35	PANJUR MENTEŞESİ	2017M.ENJ-ERK-PLS-010
36	TAHLİYE BORUSU SOMUNU	2017 M.ENJ-ERK-PLS-024
37	TAHLİYE BORUSU	2017 M.ENJ-ERK-PLS-002
38	RAF DİKMEŞİ 22 CM	2017M.MUH-002
39	RAF TIRNAĞI	M.RAF-ERK-002
40	49X52 RAF	M.RAF-ERK-003
41	ŞASE	-
42	EMP.150.70.01-EV- TEZGAH DAVLUMBAZ SC- 430F	YSC-ERK.1570-PN-0283

REFRIGERATED COUNTERS (FAN COOLING)

G YEDEK PARÇA LİSTESİ-DEMONTE GÖRÜNÜŞÜ



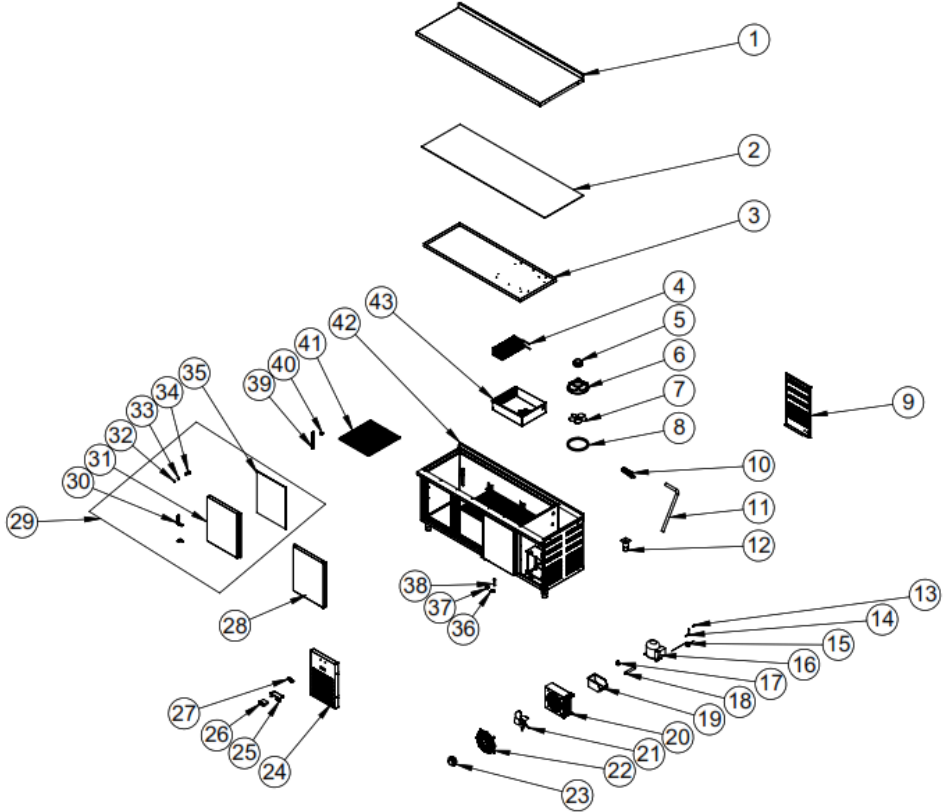


REFRIGERATED COUNTERS (FAN COOLING)

ÜRÜN KODU : EMP.200.60.01-CLS		
NO	ÜRÜN ADI	ÜRÜN KODU
1	ÜST TABLA SACI	YSC-ERK.2060-LZ-0007
2	199X52X8 MM HAM SUNTA	M.MBL-ERK-003
3	ÜST TAVA SACI (430F) TAVA SC- 430F	YSC-ERK.2070-PN-0131
4	TEZGAH EVAPARATÖRÜ RESİM NO- 909-	2017M.SOG-EVP-059
5	FAN MOTORU 50 W (ELCO VN 1020)	2017M.ELK-MTR-FMT-002
6	FAN ÇEMBER PLASTİĞİ 20CM	M.ENJ-ERS-PLS-AYR-001
7	20 CM LİK FAN KANADI(ELKO)	M.ELK-HVL-FKN-001
8	DAVLUMBAZ PLASTİK FİTİLİCPY	M.CNT-ERK-002
9	EMP.150.60-AKB MOTOR ARKA KAPAK SC	YSC-ERK.1560-PN-0122
10	PLASTİK SULUK	M.ENJ-ERK-PLS-003
11	3/4 GRİ 200 mm PVC SİRİAL TAHLİYE HORTUMU (İÇ ÇAPI	HTS-HRT-001
12	15 CM INOX BORU AYAK	M.AKS-AYK-INOX-001
13	1/4 SERVİS SİBOBU 10 CM (BAKIR BORULU)	M.SOG-MUH-001
14	8X1-ÇAP(5-16) MM BAKIR BORU	HGZ-BR-BK-6*1
15	KILCAL BAKIR BORU	-
16	AEZ4425Y HERMETİK KOMPRESÖR 1-4	2017M.SOG-KMS-018
17	DRAYER TUTACAĞI	2017M.PLS-ERK-003
18	40 GR KAYNAKLI DRAYER (DENA)	2017M.SOG-DRY-002
19	SET-401-A-PLASTİK ÇEKMECELİ KUTU	2017M.PLS-ERK-038
20	1-3 TEK KAPI KONDANSER	2017M.SOG-KDS-037
21	20 CM LİK FAN KANADI(ELKO)	M.ELK-HVL-FKN-001
22	FAN ÇEMBER TELİ 25 CM	2017M.MUH-001
23	FAN MOTORU 50 W (ELCO VN 1020)	2017M.ELK-MTR-FMT-002
24	EMP.150.60.01-MOTOR KAPI SACI-KROM ESM	YSC-ERK.1560-PN-0181
25	EMP.150.60 DJİTAL KART KORUMA SACI	YSC-ERK.1560-LZ-0025
26	EVCO DJİTAL TERMOSTAT SENSÖRSUZ EV3B22N7	M.ELK-EDM-DGT-043
27	EMPERO KABARTMALI METAL ETİKET (PLUS)	M.AKS-OZL-MTL-006
28	150.60.01 TEZGAH KAPAK AKUBLE ARA MONTAJ-SAG-430S-	ARA-ERK.1560-KROM
29	150.60.01 TEZGAH KAPAK AKUBLE ARA MONTAJ-SOL-430S-	ARA-ERK.1560-KROM
30	70.80- DİKTİP KAPI MENTEŞESİ	M.AKS-MNT-SC-006
31	EMP.150.60-AKB KAPAK GÖVDE SACI SOL-KROM ESM	YSC-ERK.1560-LZ-0067
32	CAM MENTEŞE PLASTİK BURCU	M.ENJ-ERK-PLS-022
33	70.80- SAĞ MENTEŞE UZUN PİMİ	M.AKS-MNT-SC-005
34	70.80 SAĞ(ÜST) MENTEŞE 4 mm SC	M.AKS-MNT-SC-001
35	TEZGAH KAPI CONTASI	M.CNT-ERK-001
36	PANJUR MENTEŞESİ	2017M.ENJ-ERK-PLS-010
37	TAHLİYE BORUSU SOMUNU	2017 M.ENJ-ERK-PLS-024
38	TAHLİYE BORUSU	2017 M.ENJ-ERK-PLS-002
39	RAF DİKMESİ 22 CM	2017M.MUH-002
40	RAF TIRNAĞI	M.RAF-ERK-002
41	42X49 RAF	M.RAF-ERK-001
42	ŞASE	-
43	EMP.150.70.01-EV- TEZGAH DAHLUMBAZ SC- 430F	YSC-ERK.1570-PN-0283

REFRIGERATED COUNTERS (FAN COOLING)

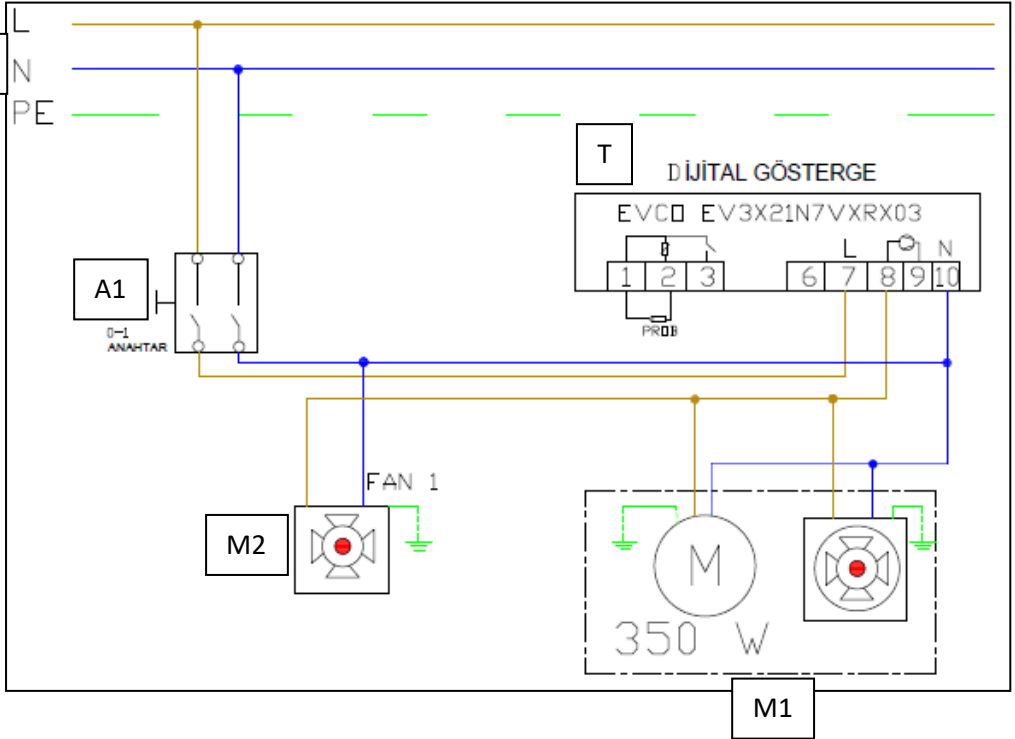
G YEDEK PARÇA LİSTESİ-DEMONTE GÖRÜNÜŞ



REFRIGERATED COUNTERS (FAN COOLING)

ÜRÜN KODU : EMP.200.70.01-CLS		
NO	ÜRÜN ADI	ÜRÜN KODU
1	ÜST TABLA SACI	YSC-ERK.2070-LZ-0026
2	199X62X8 MM HAM SUNTA	M.MBL-ERK-004
3	ÜST TAVA SACI (430F) TAVA SC- 430F	YSC-ERK.2070-PN-0131
4	TEZGAH EVAPARATÖRÜ RESİM NO- 909-	2017M.SOG-EVP-059
5	FAN MOTORU 50 W (ELCO VN 1020)	2017M.ELK-MTR-FMT-002
6	FAN ÇEMBER PLASTİĞİ 20CM	M.ENJ-ERS-PLS-AYR-001
7	20 CM LİK FAN KANADI(ELKO)	M.ELK-HVL-FKN-001
8	DAVLUMBAZ PLASTİK FİTİLİÇPY	M.CNT-ERK-002
9	EMP.150.60-AKB MOTOR ARKA KAPAK SC	YSC-ERK.1560-PN-0122
10	PLASTİK SULUK	M.ENJ-ERK-PLS-003
11	3/4 GRİ 200 mm PVC SİRİRAL TAHLİYE HORTUMU (İÇ ÇAPI 19mm)	HTS-HRT-001
12	15 CM INOX BORU AYAK	M.AKS-AYK-INX-001
13	1/4 SERVİS SİBOBU 10 CM (BAKIR BORULU)	M.SOG-MUH-001
14	8X1-ÇAP(5-16) MM BAKIR BORU	HGZ-BR-BK-6*1
15	KILCAL BAKIR BORU	-
16	AEZ4425Y HERMETİK KOMPRESÖR 1-4	2017M.SOG-KMS-018
17	DRAYER TUTACAĞI	2017M.PLS-ERK-003
18	40 GR KAYNAKLI DRAYER (DENA)	2017M.SOG-DRY-002
19	SET-401-A-PLASTİK ÇEKMECELİ KUTU	2017M.PLS-ERK-038
20	1-3 TEK KAPI KONDANSER	2017M.SOG-KDS-037
21	20 CM LİK FAN KANADI(ELKO)	M.ELK-HVL-FKN-001
22	FAN ÇEMBER TELİ 25 CM	2017M.MUH-001
23	FAN MOTORU 50 W (ELCO VN 1020)	2017M.ELK-MTR-FMT-002
24	EMP.150.60.01-MOTOR KAPI SACI-KROM ESM	YSC-ERK.1560-PN-0181
25	EMP.150.60 DJİTAL KART KORUMA SACI	YSC-ERK.1560-LZ-0025
26	EVCO DJİTAL TERMOSTAT SENSÖRSUZ EV3B22N7	M.ELK-EDM-DGT-043
27	EMPERO KABARTMALI METAL ETİKET (PLUS)	M.AKS-OZL-MTL-006
28	150.60.01 TEZGAH KAPAK AKUBLE ARA MONTAJ-SAG-430S-	ARA-ERK.1560-KROM
29	150.60.01 TEZGAH KAPAK AKUBLE ARA MONTAJ-SOL-430S-	ARA-ERK.1560-KROM
30	70.80- DİKTİP KAPI MENTEŞESİ	M.AKS-MNT-SC-006
31	EMP.150.60-AKB KAPAK GÖVDE SACI SOL-KROM ESM	YSC-ERK.1560-LZ-0067
32	CAM MENTEŞE PLASTİK BURCU	M.ENJ-ERK-PLS-022
33	70.80- SAĞ MENTEŞE UZUN PİMİ	M.AKS-MNT-SC-005
34	70.80 SAĞ(ÜST) MENTEŞE 4 mm SC	M.AKS-MNT-SC-001
35	TEZGAH KAPI CONTASI	M.CNT-ERK-001
36	PANJUR MENTEŞESİ	2017M.ENJ-ERK-PLS-010
37	TAHLİYE BORUSU SOMUNU	2017 M.ENJ-ERK-PLS-024
38	TAHLİYE BORUSU	2017 M.ENJ-ERK-PLS-002
39	RAF DİKMESİ 22 CM	2017M.MUH-002
40	RAF TIRNAĞI	M.RAF-ERK-002
41	42X52 RAF	M.RAF-ERK-003
42	ŞASE	-
43	EMP.150.70.01-EV- TEZGAH DAVLUMBAZ SC- 430F	YSC-ERK.1570-PN-0283

H ELECTRIC CIRCUIT SCHEMA



EMP.150.70.01

I	A1	T	M1	M2
Terminal	Large lighted 0-1 switch	Digital Indicator	Compressor and condenser fan	Refrigerator inner cooling fan